

# Interreg IIIA Newsletter



Number 01

Spring, 2003

## Key Articles

Facilitation Network in Place -	1
Programme Development Working Group –	2
Partner Search –	3
Progress so Far –	4
Case Studies –	6

## Key Information

- ❖ Quarterly Interreg Newsletter launched
- ❖ Interreg Officer technical assistance network now complete

## Deadlines

Submission Dates

30<sup>th</sup> June, 2003  
20<sup>th</sup> October, 2003

## Events

Application support workshops in May.  
See page 8.

# Facilitation Network in Place

## How the Interreg Officers can help develop projects

Last autumn the UK technical assistance network was finally completed. There are now four Interreg Officers employed on the UK side each responsible for a geographical area; Alex Bolland is covering East Sussex, Ruth Hartshorn Brighton and Hove including the Sussex universities, Kael Long is covering Medway and North Kent (Dartford, Gravesham and Swale) and Thomas Molloy is responsible for the rest of Kent.

### What is the Facilitation Network?

The UK facilitation network consists of four Interreg Officers that can provide independent support and advice to *anyone* considering applying to Interreg IIIa for funding. The Interreg Officers are closely linked into the programme and can provide up to date advice on this funding stream. A similar network exists in the French eligible area and both sides are in daily contact.

The Interreg Officers will be able to assist potential project leaders in a variety of different ways. Some of the support that we can provide is outlined below, however, should you require any further information please do not hesitate to contact us!

*Continued over the page*

For more information please visit the Interreg III A web site <http://www.interreg3.com> or contact the facilitation network:

**Brighton and Hove** – Ruth Hartshorn 01273 29 1079  
[ruth.hartshorn@brighton-hove.gov.uk](mailto:ruth.hartshorn@brighton-hove.gov.uk)

**Kent** – Thomas Molloy 01622 22 1944  
[thomas.molloy@kent.gov.uk](mailto:thomas.molloy@kent.gov.uk)

**East Sussex** – Alex Bolland 01273 48 2643  
[alex.bolland@eastsussexcc.gov.uk](mailto:alex.bolland@eastsussexcc.gov.uk)

**Medway and North Kent** – Kael Long 01634 33 8127  
[kael.long@medway.gov.uk](mailto:kael.long@medway.gov.uk)

## **Facilitation Network in Place**

(continued)

**Information** – The Interreg Officers will be able to provide people with initial information about whether the project proposal is eligible for Interreg IIIa support. We can supply you with introductory information and can also support you in completing the application form and understanding the guidance notes.

**Developing a project** – If you choose to apply for Interreg IIIa funding the Interreg Officers can help you to find suitable partners, wherever possible. Partner searches can be carried out through the French facilitation network. The Interreg Officers can also put you in contact with other project leaders developing bids in similar fields, where appropriate. Finally, assistance can also be given with preparations for first meetings with partners if required.

**Financing your project** – The Interreg Officers will be able to advise you on eligible expenditure for Interreg projects, they can also signpost project leaders to potential sources of matched funding.

**Completing your grant application form** – The Interreg Officers will provide support wherever needed to project leaders who are completing the grant application form. Preliminary feedback will be provided on any application, provided we receive it

within an agreed timeframe. Technical workshops will be arranged throughout the year, see page 8 for more details.

## **Programme Development Working Group**

### **A look at the role of the Programme Development Working Group (PDWG)**

#### **What is the PDWG?**

The Programme Development Working Group has approximately 20 members from both sides of the Channel who have been selected to represent the organisations and sectors involved in Interreg. The group meets approximately every two months to look at ongoing issues with the programme.

#### **Recent Discussions Phasing**

The recommended length for projects remains two years. Where projects genuinely need to be longer than two years, the Programme Steering Committee can decide to approve the project in principle in its entirety, or just for the first two years. Where it does approve a project of longer than two years, money will be set-aside for the entire project. An evaluation of the project progress will be submitted to the last Programme Steering Committee before the end of the first two years, and all being well, the money for the next two

*Continued on next page*

---

## UK Partner Search

years will be confirmed. If progress is not satisfactory, the Programme Steering Committee will release the money back to the programme for the funds to be allocated to another project.

### Retrospection

It is now possible to claim for retrospective costs for project preparation throughout the programme. Any project may claim for retrospection as long as the project has not been completed before the date of the Steering Committee.

### Uprating

The system whereby projects may apply for the standard maximum level of grant (40%) to be uprated to 50% of the eligible expenditure, is under review. This issue will be discussed at the PDWG in March and it is hoped that a decision can be reached – contact your facilitator to find out how these changes may effect projects to be submitted in June.

## Partner Searches

The Interreg Officers can help you with partner searches, to both network your project in the UK eligible areas and to help you find partners in the French eligible area. Your partner search will be circulated to the French facilitation network that is well linked to match you to relevant organisations.

### The Green Way Project

A team of teachers from a school in Neufchâtel-en-Bray are looking to develop a project based around the Green Way, a trail that includes the Cuckoo Trail in East Sussex. The teachers have two groups of students one aged 15-18 studying secretarial work and accounting, the other aged 18-20 are in the first year of an accounting and communication course.

The school is looking to work with a school in East Sussex to bring the Green Way alive on both sides of the Channel. This would improve the students' practical experiences while developing sightseeing and cultural activities.

### Key Elements

The creation of a bilingual game based upon the journey of the mascot (Tom Street) along the Green Way in both France and England, to highlight the tourist attractions in the villages along the route.

T-shirts with the design of the mascot will be sold at markets in France and Sussex.

To develop citizenship thanks to cultural exchanges around traditional activities (sports and cultural exchanges, Franco-British meetings, mail and educational exchanges).

For more information contact your Interreg Officer or:  
Béatrice VALLEE  
moaxma@wanadoo.fr



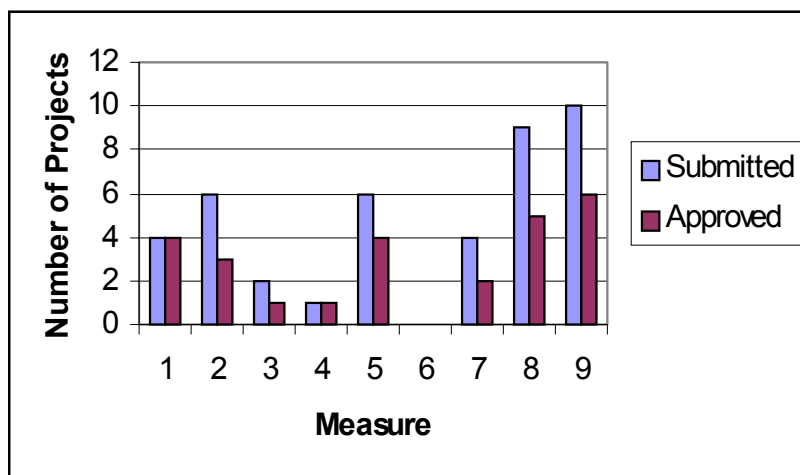
## Progress so far

### After four rounds of the Programme Steering Committee we look at the applications to date

There have now been five submission deadlines for Interreg applications and the Programme Steering Committee has met three times to date. There has been a steady increase in the number of applications received from ten in the first round to seventeen in round three.

The Steering Committee has approved twenty-five projects to date, allocating approximately 10% of the overall envelope for the programme.

The graph below shows the projects submitted and approved for rounds one, two and three across the whole programme area.



Number of projects submitted and approved by measure for rounds one, two and three.

Priority Three (Promoting an Attractive and Welcoming Region) which includes measures seven, eight and nine has been the most popular so far. However, this was anticipated when the programme was developed and forty two percent of the total financial allocation is to this priority.

The first three rounds have seen a strong representation in projects submitted from the universities.

The universities have submitted a wide range of projects, both focussing on key research areas (under measure five) and looking at issues affecting the wider community. The voluntary and community sector are starting to apply for funds, it is hoped that with the facilitation network now in place this will increase as will applications from SMEs and other groups.

---

# CASE STUDIES

## Beaches at Risk

**With the collapse of the West Pier in Brighton dramatically demonstrating the importance of good management of coastal areas, researchers at the University of Sussex have won over €1.6 million of INTERREG funding to study coastal regions.**

Coastal researchers at the University of Sussex, East Sussex County Council, l'Université de Rouen and l'Université du Littoral along with other partners have secured funding for the first phase of a new trans-national research project on beach management.

Beaches At Risk (BAR) will highlight the importance of effective beach management for coastal defence, dune rehabilitation, tourism and biodiversity conservation. It will identify beaches suffering greatest erosion on both sides of the Channel, assess their susceptibility to predicted sea level rise and increased storminess, identify nature conservation sites that

would be lost or damaged as a result, and identify the risks for coastal management.

The BAR project will identify beaches suffering greatest erosion on both the Channel coasts in Brighton and Hove, East Sussex and Kent and Seine Maritime, Somme, Nord and Pas-de-Calais.

In this first two-year phase, the project brings together geographers, geologists, ecologists, coastal managers and coastal users from both sides of the Channel whose sharing of expertise will enhance understanding of the nature of the region and the risks it faces in the coastal zone.

## Between Two Spaces

### Co-operation through Contemporary Visual Art

Anyone who knows Brighton will recognise the distinctive Fabrica church spire in the Lanes. The gallery is housed in the former Holy Trinity church and is committed to promoting understanding of

contemporary visual art. Their Interreg project "Between Two Spaces" provides a programme of visual art exhibitions and events throughout 2003 and 2004.

Continued over the page

Fabrica's winter 2002 exhibition 'Feelers', included a video installation that was first shown at one of their partner organisations Espace Croisé in Lille. The dramatic video piece provided a great talking point at the exhibition.

As the winter draws on Fabrica is closed to the public, however they are busy preparing for other events forming part of their Interreg project. When Fabrica re-opens in April events will include co-commissions with Espace Croisé

as well as cross-site educational exchanges and cross-cultural educational activities for schools and colleges.

The project has a particular impact for young people with a planned artist exchange programme for students and artists to develop networks between the two areas. The project will also involve an audience development programme with specific educational activities that target young people.

## **LINKS - Liaisons Interuniversitaires entre le Nord Pas de Calais, le Kent et l'est du Sussex**

A partnership of universities in Kent and East Sussex has been awarded €300,000 funding to link up with Universities in Nord Pas de Calais. The partners have a shared vision of co-operation and collaboration and have outlined plans for joint activities over a six-year period. The current funding covers the first two years.

On the UK side, the partnership encompasses the Universities of Kent, Greenwich, Brighton and Sussex, Canterbury Christ Church University College and Kent Institute of Art & Design. The

seven French higher education institutions are already members of a network - the Pôle Universitaire Européen Lille Nord Pas de Calais.

The Kent and French partners were previously part of a successful Interreg II project, LINK, and they are delighted to be joined by colleagues from East Sussex in a larger network. They aim to reach out further to Universities in Picardie, Rouen and Le Havre during the project and to make a significant contribution to the creation of the European Higher Education Area.

*Continued over the page*

The project will promote:

- the internationalisation of education, including staff and student mobility; joint degrees; the harmonisation of qualifications
- joint research, drawing on complementary teams on each side of the Channel
- life-long learning and social inclusion, including work on equalising opportunity for non-traditional students and disability
- enhanced knowledge of cross-border opportunities and the promotion of the region

For more information contact Sheila Boulton [s.boulton@ukc.ac.uk](mailto:s.boulton@ukc.ac.uk)

---

## Application Support Workshops

Two Application Support workshops are being organised in May to provide information for project leaders on how to complete the application form. The workshops will include general advice on filling in the application form as well as question and answer sessions. One workshop will be held in Kent / Medway on the 13<sup>th</sup> May, the second will cover Brighton and Hove / East Sussex and will be on the 15<sup>th</sup> May. For more information please contact your Interreg Officer.

**To put an article in the next edition of the Interreg Newsletter please forward your article to Ruth Hartshorn by the 16<sup>th</sup> May 2003.**

**Thank you.**

---

For more information please visit the Interreg III A web site <http://www.interreg3.com> or contact the facilitation network:

**Brighton and Hove** – Ruth Hartshorn 01273 29 1079  
[ruth.hartshorn@brighton-hove.gov.uk](mailto:ruth.hartshorn@brighton-hove.gov.uk)

**Kent** – Thomas Molloy 01622 22 1944  
[Thomas.molloy@kent.gov.uk](mailto:Thomas.molloy@kent.gov.uk)

**East Sussex** – Alex Bolland 01273 48 2643  
[alex.bolland@eastsussexcc.gov.uk](mailto:alex.bolland@eastsussexcc.gov.uk)

**Medway and North Kent** – Kael Long 01634 33 8127  
[Kael.long@medway.gov.uk](mailto:Kael.long@medway.gov.uk)

